

**PECK**  
YACHTS  
**GIGI IV**



## 2020 OCEAN ALEXANDER

**LOA:** 112' (34.14m)  
**Beam:** 24' 6" (7.47m)  
**Max Draft:** 6' 3" (1.9m)  
**Speed:** Cruising 17 Knots  
Max 24 Knots

**VAT Paid:**

**Build/Model Year:** 2019 / 2020  
**Builder:** OCEAN ALEXANDER  
**Type:** Motor Yacht  
**Price:** \$12,995,000 USD  
**Location:** Fort Lauderdale, Florida  
United States

### Additional Specifications For GIGI IV:

<b>LOA:</b>	112' (34.14m)	<b>Delivery/Model</b>	2020
<b>Beam:</b>	24' 6" (7.47m)	<b>Year:</b>	
<b>Max Draft:</b>	6' 3" (1.9m)	<b>Year Built:</b>	2019
<b>Hull Material:</b>	Fiberglass	<b>Builder:</b>	OCEAN ALEXANDER
<b>Hull Config:</b>	Modified V-Hull	<b>Type:</b>	Motor Yacht
<b>Range At Cruise</b>		<b>Engines:</b>	2600 HP,Twin, 2020, Inboard, Diesel, MTU, 16V 2000, 450hrs / 450hrs
<b>Speed:</b>		<b>Staterooms:</b>	5
<b>Range At Max</b>		<b>Sleeps:</b>	10
<b>Speed:</b>		<b>Heads:</b>	6
<b>Speed:</b>	Cruising 17 Knots	<b>Captain Cabin:</b>	No
	Max 24 Knots	<b>Classifications:</b>	
<b>Fuel Capacity:</b>	5500 Gal	<b>MCA: ISM:</b>	
<b>Water Capacity:</b>	1060 Gal		
<b>Flag:</b>	USA		
<b>Location:</b>	Fort Lauderdale, Florida United States		
<b>Price:</b>	\$12,995,000 USD		

## **Vessel Highlights**

- Unique “on deck” master stateroom offers additional private day head at on deck level
- Full walk around deck (rarely found on similar size yachts)
- Tri-deck configuration allows for a great sky lounge behind the enclosed Pilothouse with spacious fly bridge above
- Beautifully executed and upgraded interior decor by experienced owners
- Less than 375 original hours on 16V2000 MTU engines
- Sellers considering moving up to a larger yacht
- Turn key ready late model (2020) tri-deck Ocean Alexander with on deck master offered for sale now and ready for your enjoyment tomorrow!
- Unique hydraulic fold down terrace (on main deck Port side) accessed from main salon/formal dining area.
- All inside access doors on the main deck are automated (Two are double doors and two are single. All are high polished stainless steel)
- At rest stabilization
- Bow and stern thruster
- Paserelle
- Remote Controlled blinds (main salon, dining area, master stateroom and skylounge)

## **Description**

This 2020 Ocean Alexander 112' designed by Evan K. Marshall.

Without a doubt, this tri deck yacht offers a never achieved before configuration with full walk around deck combined with a full beam master stateroom that features an additional private day/night head on the main deck level.

The aft deck accommodates 8 with a large U-shaped settee and chairs as well as a walk behind bar this provides a wonderful "Al Fresco" setting for a luxurious outdoor dining experience.

Access to the main salon is via double s/s fully automated doors. The spacious main salon with the formal dining area forward benefits from large windows as well as a fully hydraulic port side platform that drops down to make a patio off the dining area which allows for a regal dining experience.

The interior decor was highly upgraded by experienced and knowledgeable owners during the build. The backlit stone work in the main salon is a prime example of the attention to detail that the owners had when designing this yacht.

The general layout accommodates 8 in the owner's party plus an additional gym/exercise room on the port side lower deck. Crew accommodations for up to 6 crew are located aft and features a lounging area and a fully equipped kitchenette. Up in the Pilothouse, there are 3 helm chairs to operate and monitor all "Space age electronics" and all systems on board.

Just aft of the PH is the sky lounge; generous seating, walk to bar and a day head are part of this sought-after room for comfortable viewing thanks to large windows while underway.

From the sky lounge aft is another automated door to access the boat deck. Molded stairs grants access to the fly bridge above. On a nice day, all guests on board can enjoy a bird's eye view of the surroundings under the hard top.

If you are looking for the "Ultimate Yacht" in this class and size, this 112'OA offers it all and she is "Turn Key Ready" with only 350 original hours on her 16v2000 (2,600 HP) engines allowing cruising at 17 kts with a maximum speed of 24 kts.



## **Salon**

- Wood paneling and cabinetry
- Large windows
- Evan K Marshall custom design salon furniture and sofa
- Custom wood flooring in lieu of carpet
- Coffered ceiling feature in wood
- Stone countertops
- A/V closet, starboard, with:
- KVH TracVision antenna controller
- Panamax M4315 Pro amplifier
- Sony Blu-ray player
- Four DirecTV receivers
- Two Creston HD-XSPA processors
- Creston DMF-CI-8 8-card interface
- AC Infinity amplifier
- Two large paned electric sliding glass doors on aft bulkhead

## **Dining Room**

- Room divider cabinet, fitted out for storage
- Pegs and dividers be installed for china, glass and silver storage
- Four paned, electric double sliding S/S door, portside
- Large custom wood dining table, with seating for ten
- Coffered ceiling feature
- Walk-up Bar with sink
- Jenn-Air Drawer refrigerator under counter
- Sub-Zero® wine cooler under counter
- Starboard Companionway with stone flooring and exterior door
- Starboard Companionway
- Day head with sink and cabinet

## **Galley**

- Wood panel and cabinetry with positive-latch doors or proprietary drop-lock drawers. Provides containment of stored objects while underway.
- Galley storage cabinetry with hidden hinges
- Stone countertops Stone floor in galley
- Blanco® S/S kitchen Sink
- Wall mount range hood
- Overhead dish locker
- Wolf® 36" induction cook top
- Wolf® 36" electric oven
- Vent-a-Hood
- Sub-Zero® 36" built-in over and under Refrigerator/Freezer
- Whirlpool® trash compactor
- Thermador® microwave
- ASKO® dishwasher
- Sub Zero® icemaker
- In-Sinkerator instant hot water dispensers
- Custom S/S potholder for cook-top for securing pots while cooking underway
- Settee with table
- Portside exterior door

## **Master Stateroom On-Deck**

- Large windows with 180-degree panoramic view
- Electric black-out blinds
- King-sized berth with upgraded innerspring mattress.
- Two nightstands with granite or marble countertops.
- Vanity/Computer table on port with flip-up mirror
- Cushioned reading settee and fixed coffee table at port

## **Master Head**

- Night/Day head, at port, with sink/cabinet
- His and Hers vanity's with sinks, custom wood base cabinet, lockers and drawer below, mirrors above, and stone countertops.
- Private glass enclosure for toilet.
- Large custom shower fitted with tempered glass enclosure
- Jacuzzi tub forward with stone face, top and walls
- Locker both side of Tub
- Flooring, shower and tub are surround by the stone
- Heated stone floors in master bathroom
- Large his and hers wardrobe closet's

## **VIP Guest Staterooms - Port and Starboard (Similar x2)**

- Large window
- Queen-size berth with upgraded innerspring mattress and storage
- Headboard finish in upholstered fabric per interior designer's spec
- Nightstands with drawers
- Vanity/dressing table with flip-up mirror
- Nook sofa built-in with cushion

## **VIP Heads**

- Ensuite Heads, Vanity with vessel sink having cabinet below and mirror above
- Head flooring selected stone
- Shower and floor surround to be faced in stone per selected option, fitted with tempered glass enclosure with securing device

## **Guest Staterooms**

### **GUEST STATEROOM – STARBOARD**

- Large window
- Two single-sized berths (Slide together for Queen) with upgraded innerspring mattress and storage below, nightstand with drawers, hanging locker, vanity/stool and ensuite head.

### **GUEST STATEROOM – PORT**

- The Port Guest Stateroom has been converted into a custom gym. The standard hanging locker, vanity/stool and ensuite head are intact.

## **Guest Head**

- Wood paneling and cabinetry
- Stone countertops with china sink
- Seamless fiberglass stall shower with one-piece glass door Industry leading seamless one-piece shower stall design provides long term protection against moisture, water intrusion behind the shower panels - leading to foul odors and water damage (Unique OA feature)
- Cabinet with mirror above sink
- Air extraction in each head by low noise extraction fans
- Planus™ toilet system throughout with unique Ocean Alexander proprietary "Toilet lock out" system.
- Provides "lock out" of flushing when holding tank is full. Prevents accidental spillage or "blow back" often found on competitor yachts. Tankage status and alarm is standard via N2KView monitoring system
- Custom bathroom fixtures stone countertops and back splash in heads with bone china sink
- Crew quarters with private head, shower

## **Lower Foyer/Companionway**

- Walk-up cabinet with counter top and overhead storage
- Refrigerator under counter
- Custom stone flooring with wood flooring in companionway.
- Stairwell to main deck with S/S handrails

## **Freezer/Laundry Room: (Unique OA Feature)**

- Located forward of the lower companionway: Custom design laundry room with dedicated pulldown ironing board, separate Maytag Washer and Dryer, sink/faucet and additional four (4) double door - refrigerators/freezers
- Storage compartments for cleaning agents, folded towels and pull out shelves
- Clothes hook and countertop
- Amtico floors and stain resistant laminate walls

## **Skylounge**

- Large windows
- Built-in custom couch
- Cocktail table
- Game table and chairs
- Walk-up Bar
- Uline® refrigerator under counter
- Uline® icemaker under counter
- S/S Handrail on carpeted staircase
- Day head
- Full height windows and electric glass sliding double paned door on aft bulkhead
- Tinted windows
- Electric blinds
- HVAC
- Access to pilothouse

## **Pilothouse**

- Three electric Stidd® helm seat
- Wood and padded leather control console with steering, engine controls and electronic instruments
- Ship's alarm panel for fire, smoke, bilge, and tank monitoring
- Ship's phone outlets for computer and fax
- Red light for night time running
- Navigation area/ship's office with file drawers, bookcases, etc.
- Forward windows with four windshield wipers with freshwater nozzles
- Port and Starboard hinged doors with access to Portuguese bridge deck

## **NAVIGATION PACKAGE:**

- Garmin three (3) 24" Touch Screens
- Garmin 8600 Series Black Box
- Garmin GPS
- Garmin GRID remote input device installed on helm chair
- Garmin 96-mile Radar with 25KW Open Array Antenna
- Garmin Autopilot GHC20
- Garmin VHF and Card Reader
- Garmin Blackbox Sounder/Plotter
- Garmin AIS with NMEA GPS
- Garmin Marine Camera (2 in engine room and 1 aft deck)
- Triband HD7 with DIRECTTV® receivers
- Ritchie Compass 5"
- iPad with built-in Garmin App for navigational
- Control/Viewing via iPad

## **PORTUGUESE BRIDGE:**

- Wing station with MTU controls and Side Power controls, port and starboard
- Seating, port and starboard and centerline
- Teak decking
- Overhead lights, port and starboard
- Stereo speakers and Courtesy lights
- Four windshield wipers with washers
- Stainless steel handrails

## **Interior Decor**

- Evan Marshall designed interior
- Wood paneling and cabinetry in semi-gloss
- Upholstered wall and ceiling panels, ceiling panels are removable
- High quality European door locks
- Cedar-lined, hanging locker with auto lighting
- Concealed hinges throughout interior cabinets
- Ergonomically designed upgraded innerspring mattresses and settees
- Innerspring mattresses for berths
- Washer/ dryer in Crew and Laundry Area
- Electrical Blinds for Salon, Dining, Master, and Skylounge
- Panasonic intercom system
- Compressed air in engine room and lazarette

### **Crestron Audio/Video Package**

- iPad linked to Crestron fully programmable A/V entertainment system. Allows full A/V control from individual
- iPad mini located for each stateroom and public area wherever there is a TV
- Include the following equipment installed at factory
- Salon: Hinge down LED 60" TV and A/V system with subwoofer
- MSR: Hinge down LED 50" TV and A/V system with subwoofer
- Sky lounge: LED 60" TV and A/V system with subwoofer
- Guest staterooms: LED TVs and A/V system
- Crew area : LED TV and Satellite receiver

### **Aft Deck/Aft Bridge Deck/Sun Deck**

AFT-DECK: Large settee with cushions and a custom wood table with removable leaf, wet bar, teak decking, overhead hardtop with lighting, speakers, CCTV camera and two floodlights, port & starboard boarding gates, drop down TV, access to salon, walk-around side decks, swim platform and skylounge/bridge deck via a fiberglass staircase.

Aft BRIDGE-DECK: Large settee with cushions and a large wood table, teak decking, overhead hardtop with lighting and speakers, BBQ Grill, fold down TV, access to skylounge and the sun deck via a fiberglass staircase.

SUN-DECK: Large settee with cushions, wood table and fold down TV. Large hot tub with sun pad lounge area, teak decking, overhead hardtop with lighting, speakers, two floodlights. Wet bars with sink and bar refrigerator, icemaker on aft deck, bridge deck, and sun deck.

### **Crew Quarters**

- Kitchenette (sink, microwave and refrigerator)
- Storage locker
- Four-person settee with an expandable table
- Three crew staterooms: captain and two high-low bunk staterooms
- Captain quarters includes desk with storage and N2KView linked Apple iPad for systems diagnostics/alerts/settings
- Full height hanging closet and Double berth with storage under
- Dedicated stainless work bench with vice and Snap-on tool chest. Also includes a wet locker (with ventilation and separate water drain) and storage compartment.
- All staterooms fully air-conditioned
- Washer and Dryer

## **General**

- Vinylester resin with high-density structural foam. High density allows for high temperature resistivity and particular advantage in thermal and acoustic insulation.
- Longitudinal and lateral fiberglass stringers filled with high-density foam
- Ocean Alexander employs various techniques to reduce sound and vibration. Focusing on providing a quiet and comfortable yachting environment through various proprietary techniques of controlling sound and noise transmission. Some of these techniques include, multiple insulation barriers including reflective materials, absorptive materials, dampening materials, air pockets and flexible and isolation mounts. Ultimately resulting in vibration/sounds levels that are industry leading and at times 1/2 to 1/10 of ISO-6954 requirements (Unique OA feature)
- Sylomer floating floor system (Unique OA standard, usually found on 130'+ vessels)
- Fiberglass with infusion lamination manufacturing technology, increases strength by 20% and reduces weight by 18% compared to hand-laid
- Reinforced collision bulkhead
- Keel, stem, chine and spray knocker sections to be reinforced
- Frameless window
- Painted exterior surface with professional grade Alexseal polyurethane paint and epoxy-based primers.
- Highest gloss and color retention compared with gelcoat or other paint brands. Guarantee color match by Alexseal. No fading, yellowing and minimum maintenance with no annual compounding necessary on exterior paint. For first 3 years just use soap and water (Unique OA standard feature, not an optional upcharge like competitors)
- All exterior hardware to be S/S 316 or to manufacturer requirements
- Stainless Steel to be used A.I.S.I type 316, 316L

## **Hull/Bottom**

- A single boot top stripe will be applied such that it is upswept at the bow
- Interior structural components all bonded to hull
- Rub rail with S/S half oval plate
- Bronze through-hull fitting

## **Mechanical**

### **MAIN ENGINES:**

- MTU®16V 2000 2,600HP engine
- Engine alarm system, for low oil pressure and high-water temperature
- Main engine foundations will be standard builder fabricated S/S316
- Lube oil change system for engines and generators with approximately 120-gallon lube tank
- Automated computerized Delta-T® intake/exhaust fans with variable frequency drives shall be mounted to facilitate the pushing and/or pulling of air through the machinery spaces and the providing of a high rate of air exchange. Ducts shall have fire dampers installed with manual/ automatic triggering that shall be tied into the machinery shut down circuits. Ducts in way of interior living space shall be insulated and soundproofed.
- System of Delta-T water separator grills used on intake and exhaust sides of system
- Adjustable/Reversible Delta-T® fans for engine exhaust located on superstructure instead of hull side
- Maximizes water protection and salt spray, resulting in safer and lower maintenance ownership (Unique OA feature)
- Stainless steel removable rails on side of engine and stainless-steel engine mounting plates
- Stabilizer with power take-off from both engines to provide redundancy (Unique OA feature)

### **GENERATOR:**

- Kohler® 65KW gensets (2x)
- Generator exhausts to be water-drop type per “Centek”, “Marine Exhaust Co.” or equal Generator set resiliently mounted and installed with sound shield and vibration dampener (Unique OA feature)

## **Other**

- Stainless steel rails on side of engine and stainless-steel engine mounting plates (Unique Ocean Alexander engineering affords industry leading torsional rigidity and engine alignment assurance. Further reducing vibration and high torque pressures)
- Color-coded piping system for easy identification
- Steel Head – CT3000 yacht crane, 3,000 lb. capacity
- Fire extinguisher system with engine-shutdown feature
- Sea Recovery 1800G/Day water maker w/auto fresh water flush operation, PH Neutralizer, UV sterilizer and Commercial Pre-filter (Standard versus competitors' optional) x 2ea
- Kahlenberg™ heavy-duty horn
- All engine room and bilge spaces primed and top coated with polyurethane paint system
- Heavy-duty commercial grade pantograph windshield wipers & washers with intermittent function
- Lighted bilge with built-in (when necessary) S/S ladder (Unique OA Feature) Ocean Alexander design in oversized shafts, rudder and other drive train systems typically one-class larger than competition. Superior handling, longevity is ensured with Ocean Alexander drive-train systems

## **Steering/Control**

- Hydraulic steering system
- Remote Engine/Thruster controller on both side of Portugal deck
- S/S rudders w/integrated zinc plates
- Dripless seal for rudder post
- Stidd® electric helm seat x 3ea
- Interior steering wheel Ultraleather wrapped (same color as dash)
- Maintenance free “dripless” seals for engine shaft packing glands
- Propeller shaft Aquamet 22HS. 22HS is a high-grade austenitic alloy stainless steel that provides superior corrosion resistance (comparable to Aqua 22) along with excellent toughness and high strength (comparable with Aqua 17). A no-compromised approach adopted by navies around the world

## **Windlass/Mooring**

- Two (2) Maxwell VWCLP4500 hydraulic vertical anchor windlasses
- Two (2) 350lbs anchors. The anchor's chain consists of 300' with S/S high tensile Swivels
- Hands-free anchor chain wash system – allows for cleaning of chain during anchor operation (Unique OA feature)
- Integral roller and chain stopper with Chain counter
- Two (2) MAXWELL VC3500 capstans on Aft Deck

## **Thrusters/Stabilizers**

- Side power Vector Fin (DAME 2013 award winner) 18 ft 2 hydraulic stabilizer fins with zero speed stabilization function.
- Sidepower's patented “curved” fin design not only provides lift underway it is also unique in the industry with active “predictive” inertia control.
- 56HP bow and 56HP stern thrusters



## **Plumbing**

### **FRESH WATER SYSTEM:**

- 4mm thickness 316 S/S water tank
- Headhunter™ pressure fresh-water system
- Cold fresh-water wash down at bow, stern and boat deck
- Dockside water connection
- Seagull™ water purifier (ADEX design award winner w/ filtration to 0.1 microns and EPA certification for microbiological purification)
- Headhunter HFF-7304L taste/odor, sediment filter and UV20 UV sterilizer (to filter fresh water for entire boat)

### **HOT WATER SYSTEM:**

- One 36KW commercial water heater for F/B Jacuzzi
- Three (3) 40-gallon water heaters with high density fiberglass insulation with dual high efficiency heating element

### **FUEL SYSTEM:**

- Fuel tankage system is comprised of 4 separate tanks for a combined capacity of 5,500US Gal. 6mm thickness marine grade aluminum fuel tank w/ high low level alarm, welded and hydro-tested by IMO standard
- Jabsco fuel transfer pump with Reverso fuel polisher
- Fuel system with venting and “catchment system” designed for burps or overflow accidents
- Dual MTU fuel filter w/ remote readout of filter performance
- Filler for fuel tanks on both sides. (Unlike others where fueling is only possible on 1 side. This unique OA feature allows for concurrent and faster fueling and negates need to move boat to complete fueling)

### **BLACK WATER SYSTEM:**

- ECOMAR EC8 Marine Sanitation Device with chlorine generator. (800 Gal/day) x 2ea

### **LUBE OIL SYSTEM:**

- Groco oil change pump & manifold
- Lube oil change system for engines and generators with used lube oil tank 120 Gal 14

## **Electrical**

### **POWER CONVERTER PACKAGE:**

- Atlas 50/60Hz Power Converter . Allows for automatic marina connection irrespective for 60Hz (USA) and 50Hz (European)

### **AC / DC SYSTEM:**

- All primary AC & DC electrical wiring is appropriately labeled throughout the yacht GFI (110V) AC outlet

in potential "wet" areas. In addition, entire boat is protected via "GFI at source" Octoplex breakers. (Ocean Alexander is unique in offering dual protection at select areas GFIC and entire boat GFIC protection)

- AGM Batteries with 40F to 140F operating temp and industry leading low self-discharge rates 1 to 3%
- Octoplex NMEA 2000 Network electrical control system
- Based on aerospace technology for remote activation, control and status reporting of AC and DC breakers. Monitors power sources (AC and DC) for voltage, frequency and amperage abnormalities and provide visual and audio alerts. Includes enhanced circuit breaker functionality with no-load indication, dimming and usage information with touch screen monitor that is user reconfigurable. Brownout configurable control through auto load shedding is included where operator designated equipment (e.g. navigation and other essential systems) remains powered-on while automatically switching other systems off. Octoplex NEMA 2000 Vessel system monitor system. Provides main access doors, tank level, bilge level and battery monitoring of current, voltage and temp. (Unique OA standard feature, not an optional upcharge like competitors) Shore power receptacle in transom w/cable master (OA is unique in making this a standard vs. optional. Cleans & boosts questionable shore power to better protect sensitive equipment onboard.)

#### AIR CONDITIONING:

- Dometic® chilled water system, air conditioning w/ air handlers for central air conditioner, rated for "Extreme Tropical Climates" (Reverse Cycle capable for operating down to 40F water temp)
- Refrigerant type is accepted worldwide under the Montreal Protocols
- Where possible A/C exits from custom made ceiling panels hidden from view. Shortens A/C ducting thus improving efficiency and speed of cooling by over 20%. Also reduces dB reading by over 7 dB (Design cues from 135)

#### LIGHTING:

- DC 24V LED lights (Aerospace quality, specially tuned color temperature for Ocean Alexander)
- DC emergency lighting system power will be provided from ship service battery system
- Flood light at back of boat deck, F/B deck
- ACR Searchlight x 2 ea
- International navigation lights
- Crestron lighting control system at salon, master and sky lounge

#### BATTERY:

- Heavy-duty batteries with charger
- Battery paralleling system with control switch
- Service battery switch

#### BONDING SYSTEM:

- Bonding system throughout
- The vessel's bonding and grounding systems include copper straps secured to the hull and running the full length of the vessel parallel to centerline. Engines, generators, metallic through hulls, strainers, and pump bodies shall be connected to the bonding strap using 8 AWG wire minimum or equivalent

#### N2KVIEW SAFETY & SECURITY MONITORING PKG:

- These security/safety automatic monitoring and alert abilities include using Apple iPad or Android for wireless access to operate, view, and alarm Octoplex data and navigation system with a fully customizable screen layout, and remote notification (cell phone) capability.
- These monitoring abilities include: Main Engines and Generators, AC Monitoring, DC House Bank Battery Monitoring, Engine Room Weather-tight Bulkhead Door, Tank Levels, Fire System, Bilge Level (Highwater), Exterior Door Sensors Unique OA standard feature, not an optional upcharge like competitors

#### **Additional**

- Onboard intranet, driven by commercial-grade 4G SIM card capable Wi-Fi router. Allows outside 4G Internet card and/or internal intranet net connection via supplied iPad to Systems monitoring, Garmin and other onboard equipment apps. (Unique OA feature)
- Vimar™ switches and outlets

## **Exterior**

- Evan Marshall designed exterior
- Ergonomically designed and laid out to enhance pilot experience/performance 2½" elliptical 316L Stainless steel handrails & stanchions on main deck , 2" round rails on FB. Elliptical conforms better to human grip than traditional round rails. Provides greater "grip strength" for safety and comfort (Unique OA feature)
- 316 stainless-steel cleats
- Fiberglass stairs to FB from cockpit
- Electric stainless-steel sliding doors for salon, dining (port and stbd.), and sky lounge. With safety light curtain that senses obstruction and protect for grandkids/pets. Also includes "foot-kick button" control for operation when both hands with full food trays/other items
- Largest fly bridge area in its class with Ocean Alexander's "cab-fwd" design, the fly bridge steering station is moved fwd to allow for better visibility and lengths the total fly bridge area available for entertaining
- Largest crew quarters in its class with Ocean Alexander's unique design, the crew quarters doubles as a Cabana. Allows for day head and rest/eat area for swimming/out of water activities without needing to access salon/main deck interiors
- Two S/S flag poles, fore and aft
- Teak and stainless swim ladder, foldable
- Weather-tight door on transom for access to engine room/ crew quarters
- White non-skid fly bridge decks
- 32" Electri-Chef™ electric barbecue custom-made for OA using 316 S/S, versus competitors' 304 materials
- Fly bridge seat with storage underneath and high gloss table
- Teak deck for aft deck and walkway to mid ship
- Teak swim platform with teak steps
- Flush-mounted deck lights, bulwark side doors for boarding
- Side boarding gates in cockpit and mid ship
- Recessed boarding ladder on starboard gunnel with OA logo teak steps (Unique Ocean Alexander standard feature Competitors either optional or not available)
- Sun-pad at bow and F/B
- Exterior ceiling panels removable and finished with Diamond faceted edging.
- Provides a sharper and structured tailored look. Also allows for easy service of navigational electronics and plumbing runs
- S/S transom gates for pets/children protection from Aft deck to swim step
- Opacmare "Transformer " multi-use stern platform
- Fold-Out hydraulic terrace to portside
- Besenzoni Paserelle
- Sun awning for aft bridge deck
- Add plug-in engine wired remote at aft deck and boat deck
- High output LED underwater lights (four at stern-aft, two at stern sides)
- Custom exterior protection canvas and windshield mesh cover and mesh screens added to all opening portlights throughout vessel
- Two 8-man life raft in valise bag

## **Custom Extended Operation Package**

- Install on yachts as back-up (Dual In-Line): A/C sea water circulation pump, fuel transfer pump, fresh water pump, treatment system pump, water maker pump, stabilizer cooling pump
- Headhunter HFF-7304L taste/odor, sediment filter and UV20 UV sterilizer (to filter fresh water for entire boat)

## **Exclusions**

Exclusions to include but are not limited to Owner's personal belongings and tender. A detailed list of exclusions to be provided at time of sale upon written request from Buyer.

**\*\*EIAPP Certificates do not convey with the sale.\*\***

## **Disclaimer**

The Company offers the details of this vessel in good faith but cannot guarantee or warrant the accuracy of this information nor warrant the condition of the vessel. A buyer should instruct his agents, or his surveyors, to investigate such details as the buyer desires validated. This vessel is offered subject to prior sale, price change, or withdrawal without notice.

## Profile



## Bow



### Swim Platform

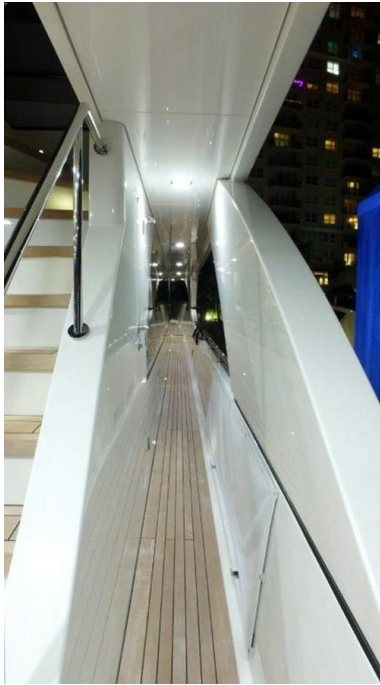


### Tide Ride Boarding Ladder





### Starboard Walkaround



### Port Walkaround





## Bow Seating



## Aft Deck Steps



**Aft Deck Seating**



**Aft Deck Seating**





**Aft Deck Seating**



**Main Salon**



**Main Salon**



**Main Salon**





**Main Salon Dining**



**Main Salon Seating**



**Main Salon Seating**



**Day Head Main Deck**





**Day Head Main Deck**



**Galley**



**Galley**



**Galley**





**Galley**



**Galley**



**Master Stateroom**



**Master Stateroom**





**Master Stateroom**



**Master Stateroom**



**Master Stateroom**



**Master Day Head**

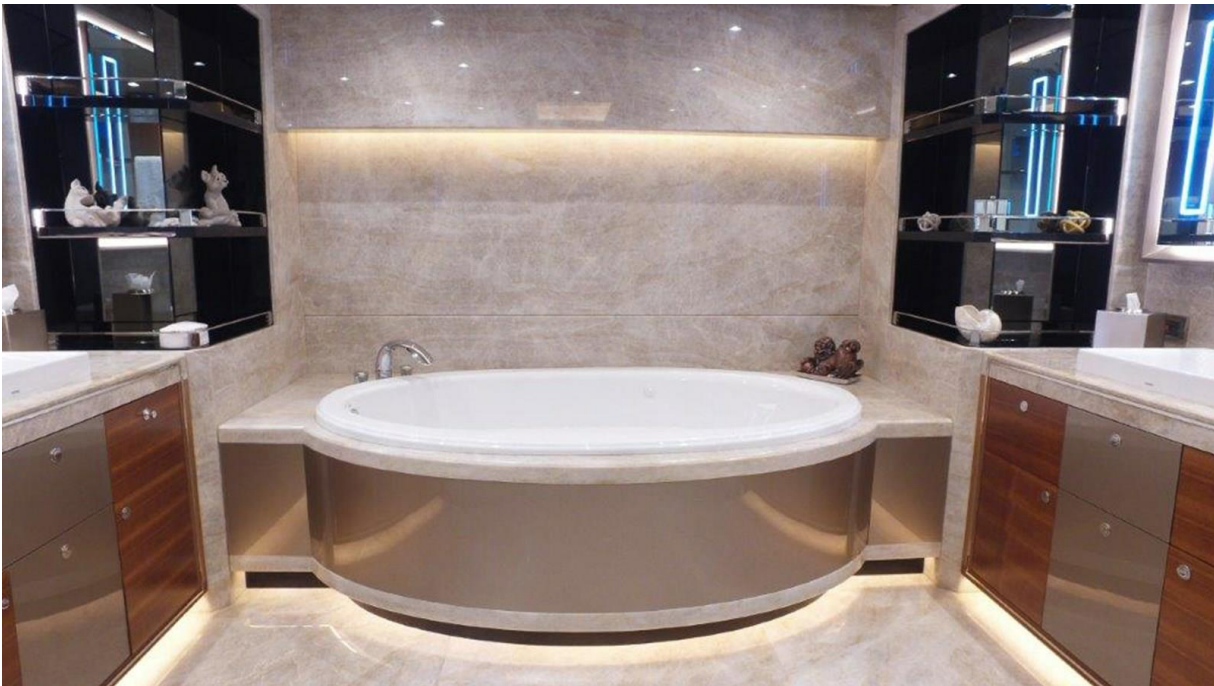




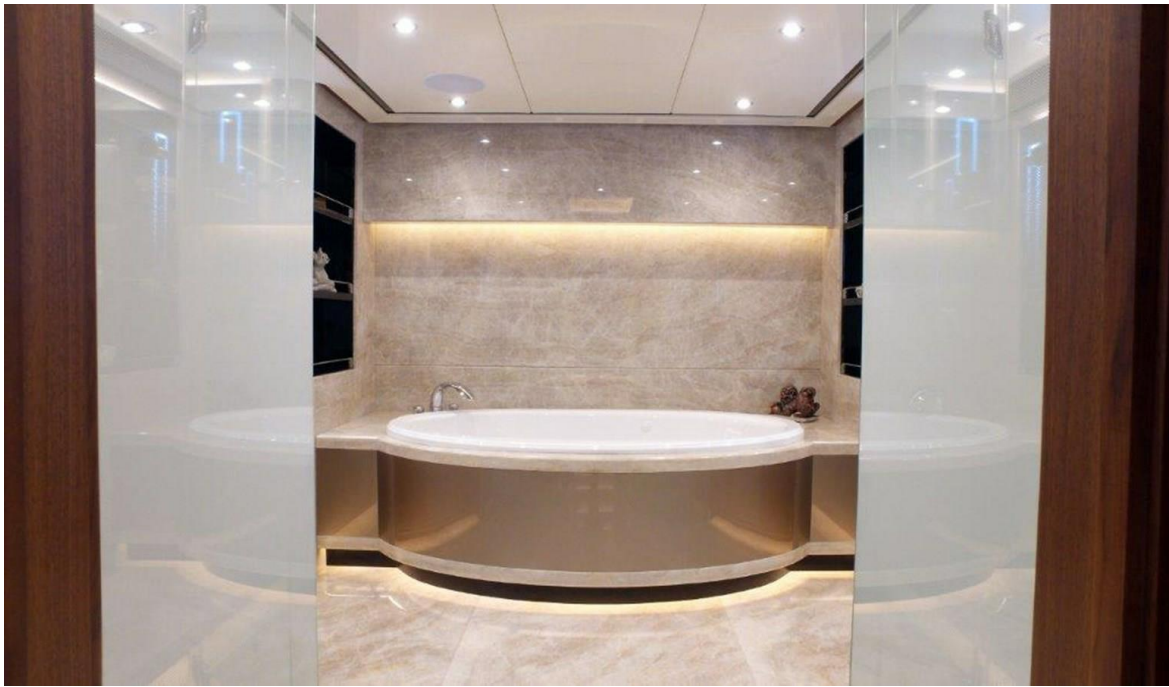
**Master Stateroom**



**Master Head**



**Master Head**



**Master Head**





**Master Head**



**Master Head**



**Master Head**



**Master Head**





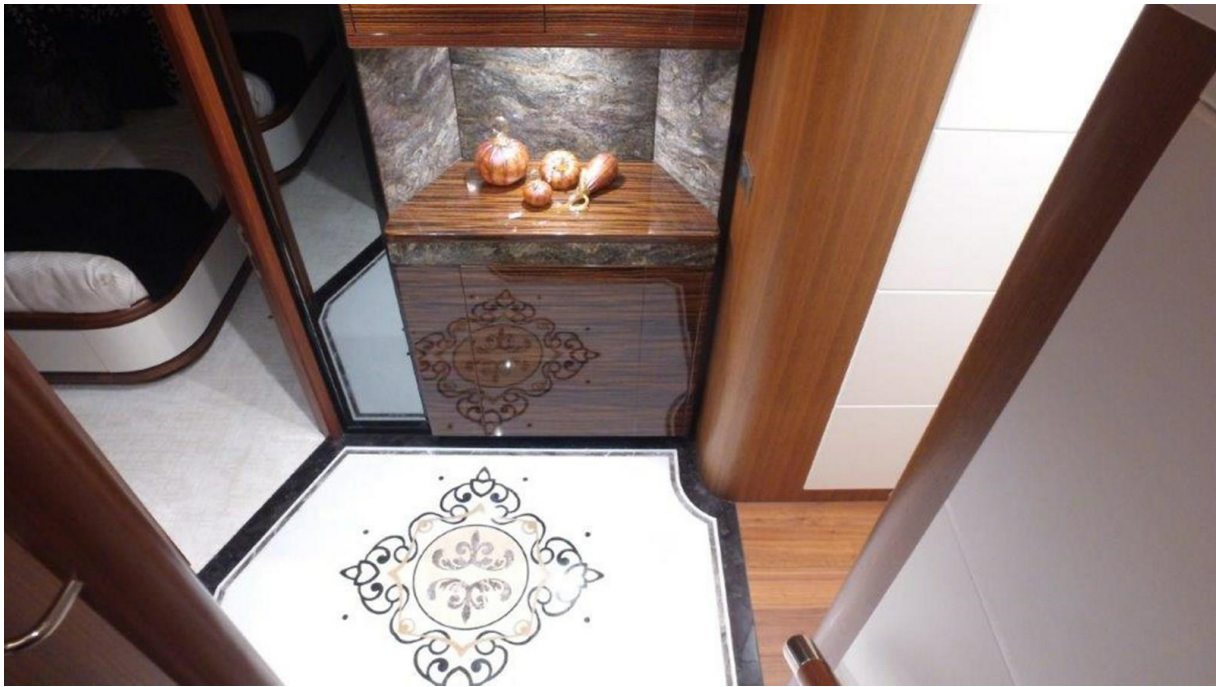
**Master Head**



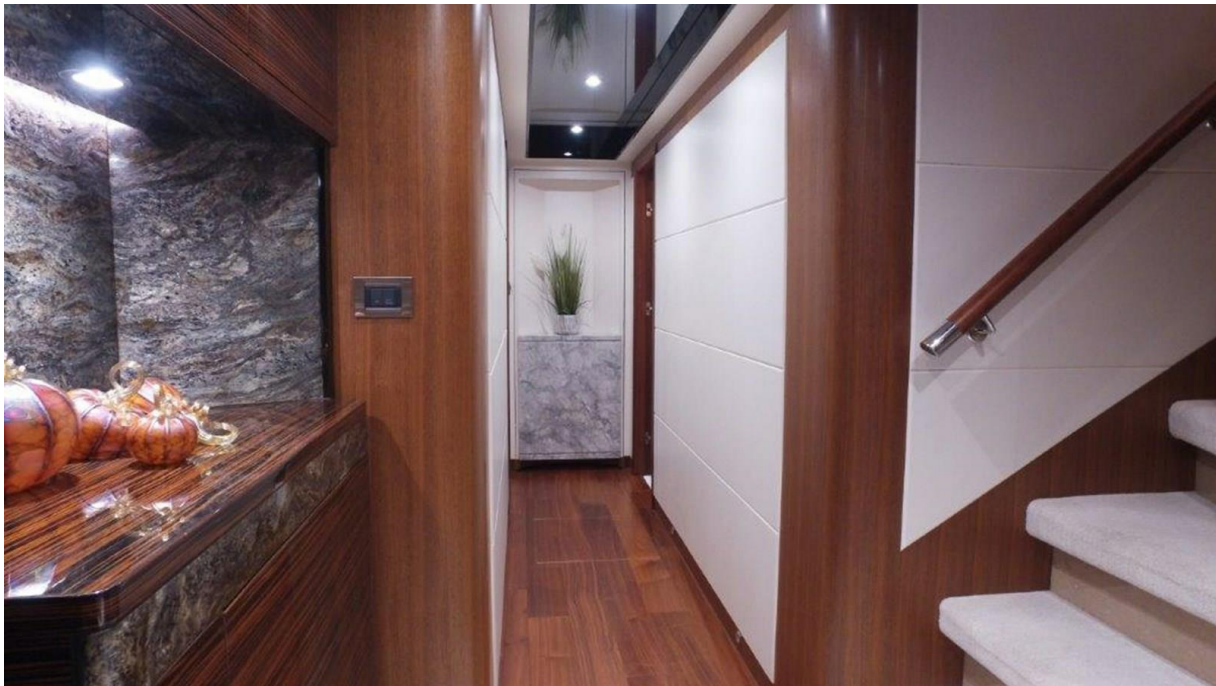
**Stairs to Master from Head**



**Stairs to Lower Staterooms**



**Lower Landing**





**Lower Landing**



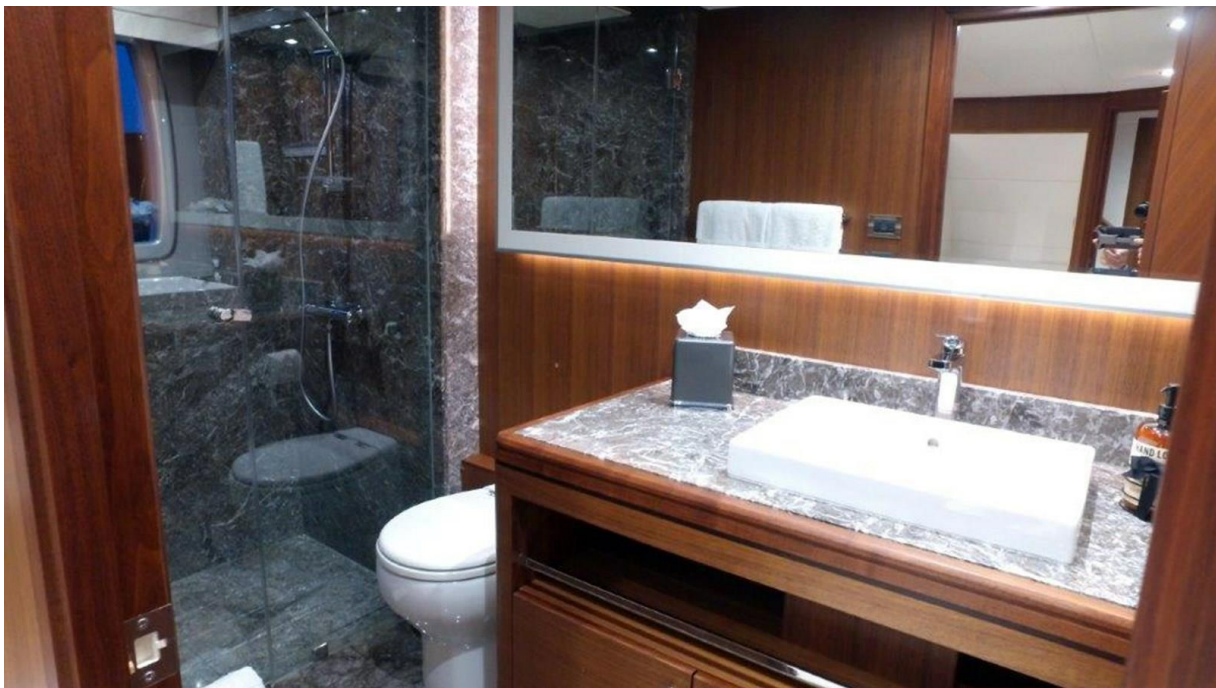
**Starboard King Stateroom**



**Starboard King Stateroom**



**Starboard Guest Head**





**Port King Stateroom**



**Port King Stateroom**



**Port Guest Head**



**Port Guest Head**





**Twin Stateroom**



**Twin Stateroom**



**Twin Guest Head**



**Twin Guest Head**





**Port Side Exercise Room**



**Port Side Exercise Room**



**Port Side Exercise Room Head**



**Lower Hallway**





**Sky Lounge Stairs**



**Sky Lounge**



**Sky Lounge**



**Sky Lounge**





**Sky Lounge Seating**



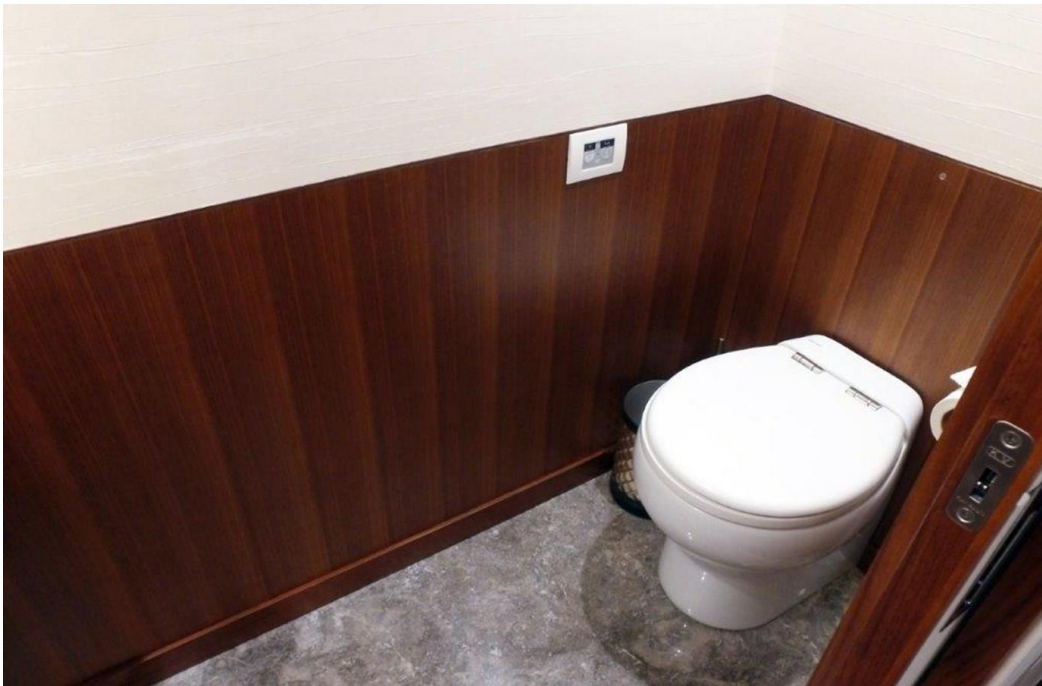
**Sky Lounge**



**Sky Lounge Head**



**Sky Lounge Head**





## Helm Electronics



## Helm



**Helm**



**Helm**





**Fly Bridge**

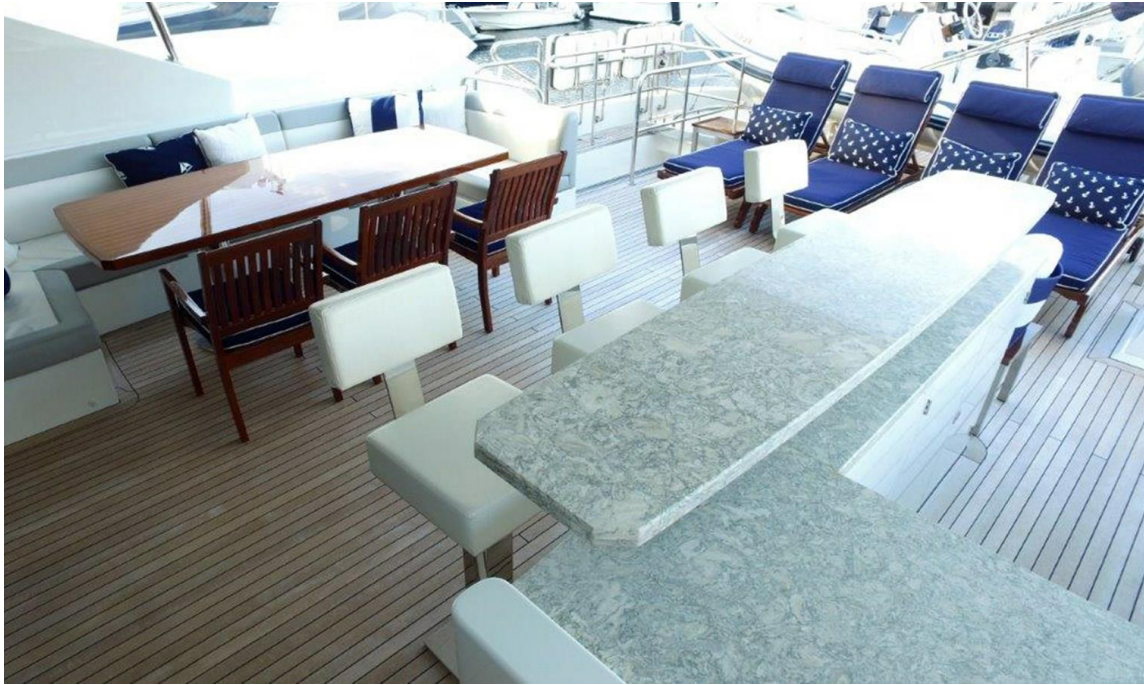


**Fly Bridge**

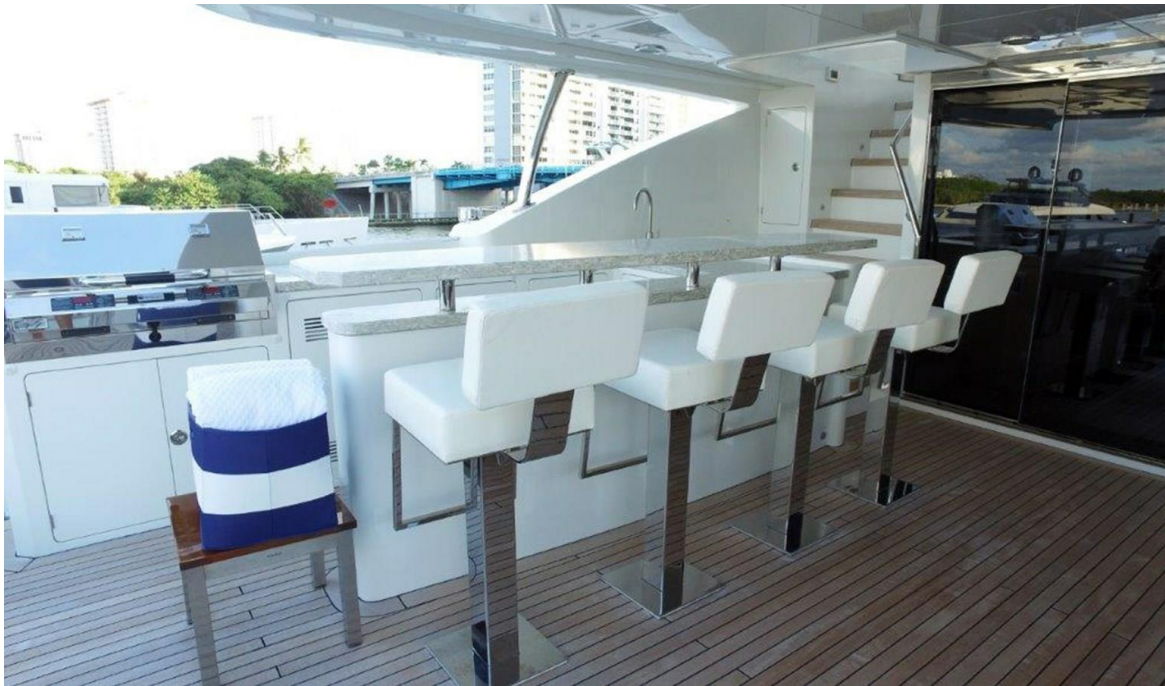




**Fly Bridge**



**Fly Bridge Bar Seating**



**Fly Bridge Bar TV**



**Fly Bridge Bar**





**Fly Bridge Barbeque**



**Stairs to Jacuzzi Deck**



**Jacuzzi Deck**



**Jacuzzi Deck**





## Jacuzzi



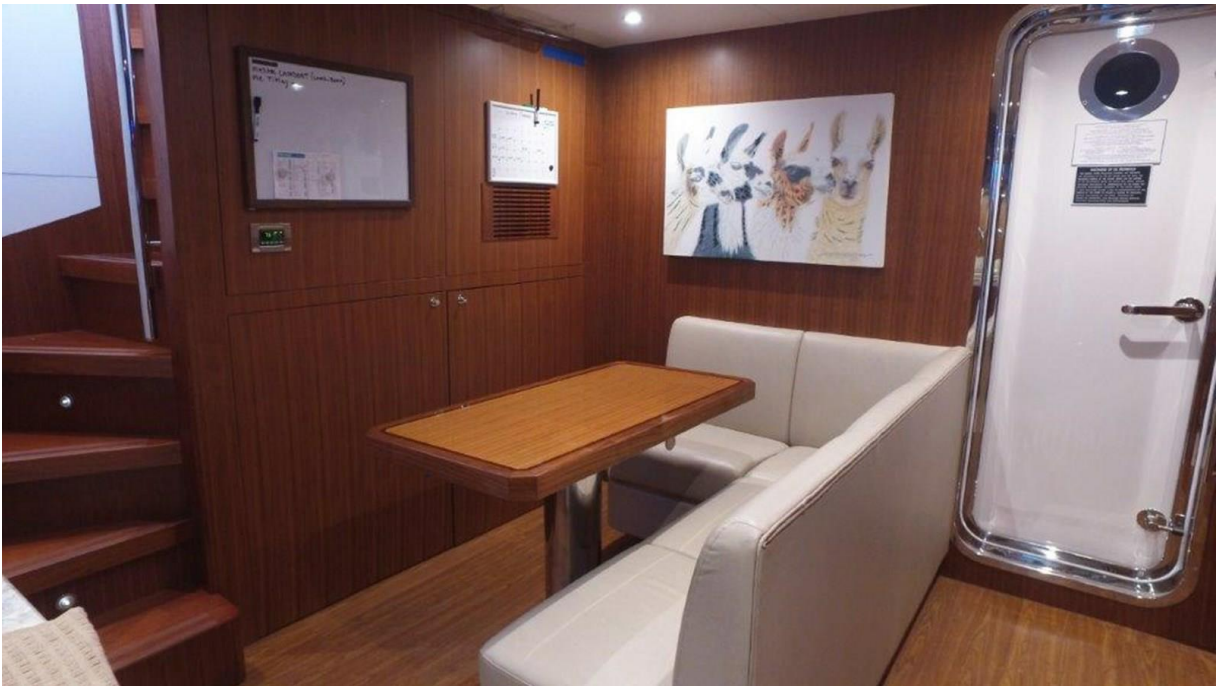
## Wet Bar



**Stairs to Crew Area**



**Crew Area**





**Crew Area**



**Crew Area**





**Crew Area**



**Crew Bunks**



**Crew Bunks**



**Captains Cabin**





**Captains Head**



**Engine Room**





**Port Engine**



**Starboard Engine**





**Dingy**



**Profile**



## Profile

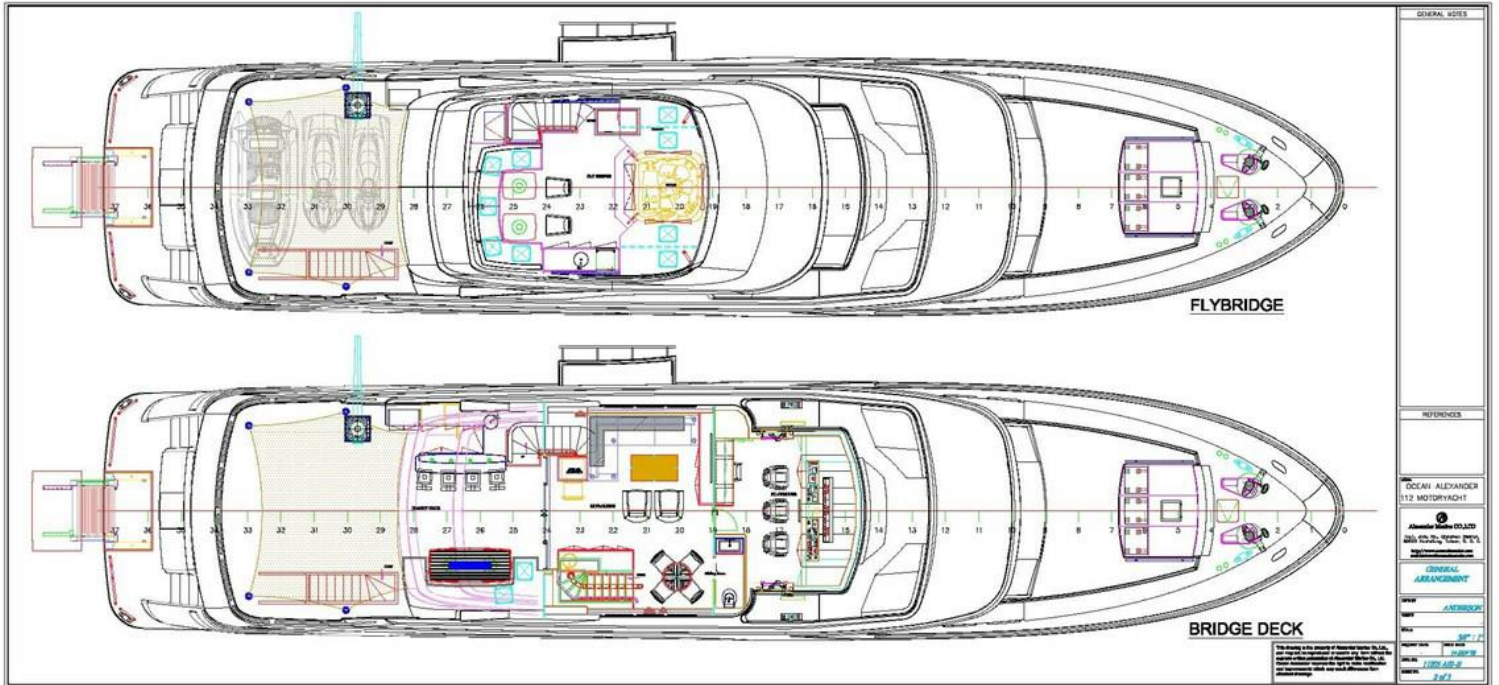




## Layout



# Layout



# Layout

